

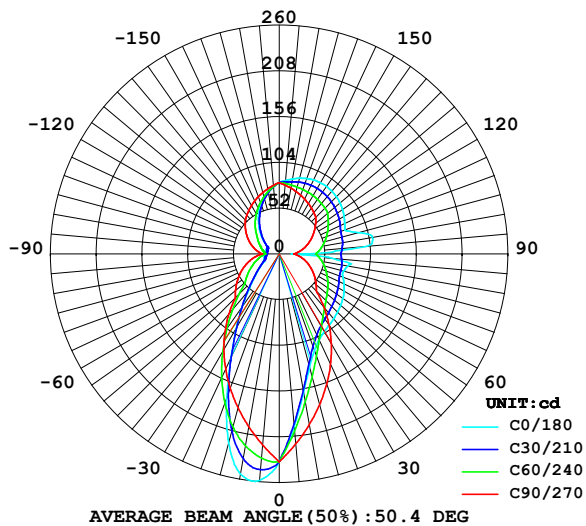
## LUMINAIRE PHOTOMETRIC TEST REPORT

Report number:

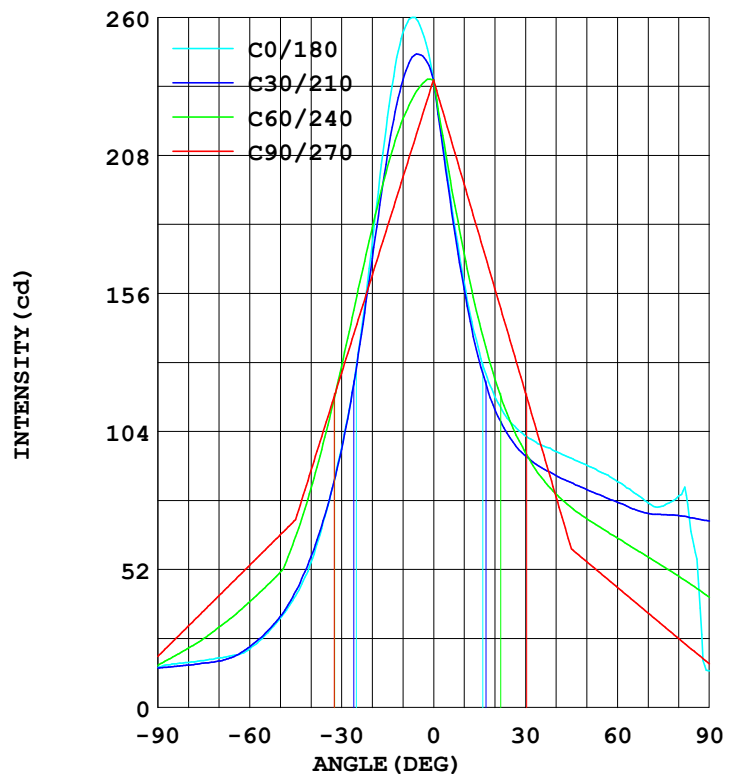
MANUFACTURER:	Address:	
NAME: 551103	TYPE:	WEIGHT:
SPECIFICATION:	DIMENSION:	SERIAL No.:

DATA OF LAMP		Imax(cd)	259.5	S/MH(C0/180)	0.83
MODEL		EFFICIENCY(%)	100.0	S/MH(C90/270)	0.85
NOMINAL POWER(W)	8	TOTAL FLUX(lm)	731.08	Voltage(V)	230.6
RATED VOLTAGE(V)	230	EFFICIENCY(lm/W)	89.2	Current(A)	0.064
NOMINAL FLUX(lm)	731.1	$\eta$ up(%)	43.2	Power(W)	8.200
LAMPS QUANTITY	1	$\eta$ down(%)	56.8	Power Factor(PF)	0.557
TEST VOLTAGE(V)	230.7	Effective Flux(lm)	675.1	EEI	0.147

LUMINOUS INTENSITY DISTRIBUTION



LUMINOUS INTENSITY DISTRIBUTION



Test System:HOPOO HPG1900  
Temperature:25.3DEG  
Operators:  
Test Date:2023年09月12日

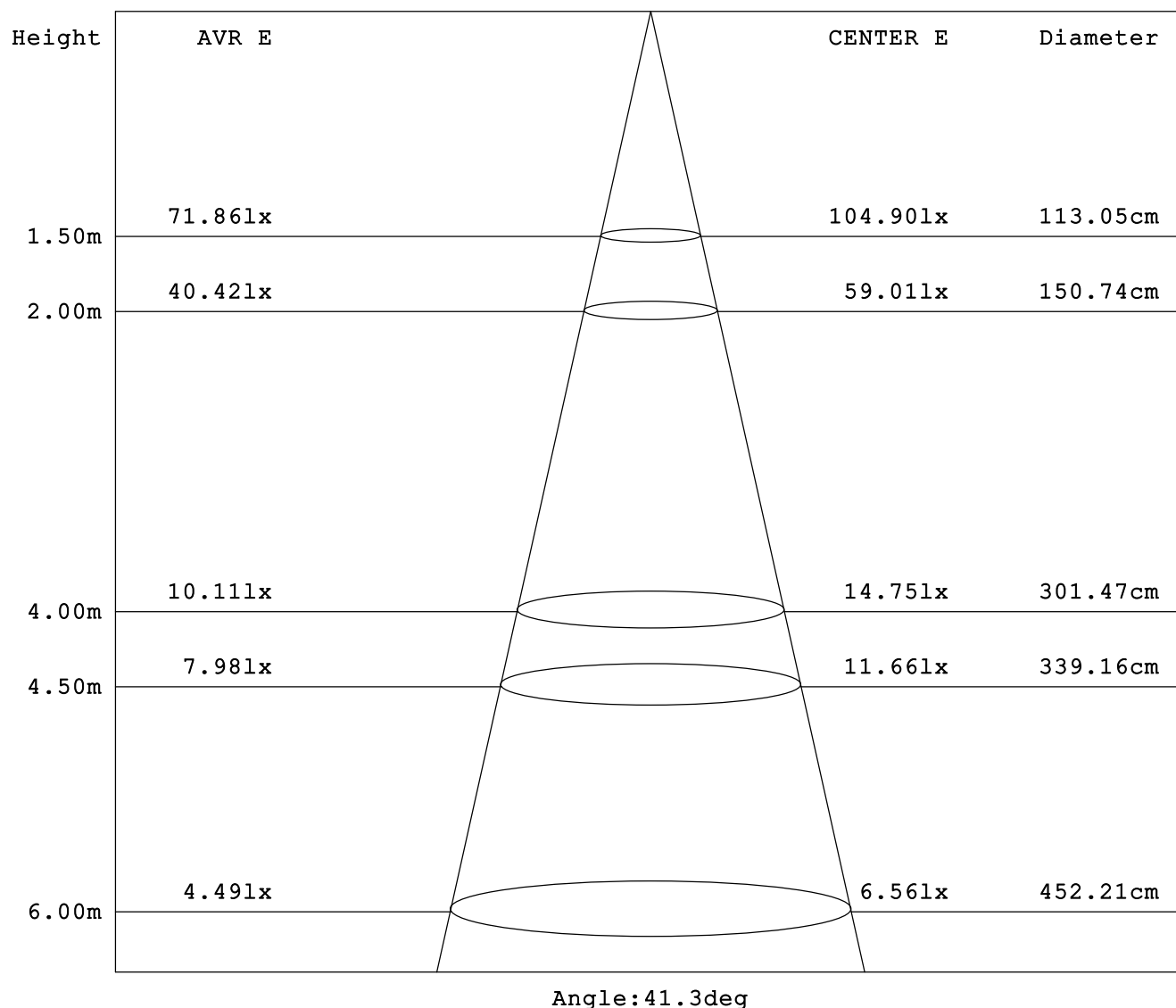
Test Set: 5.0deg/s B-Beta (TYPE B)  
Humidity:65.0%  
Test Distance:16.000 m  
Remarks:

# HONGPU GONIOPHOTOMETERS SYSTEM TEST REPORT

## AVERAGE AND CENTER E Figure

Report number:

MANUFACTURER:	Address:	
NAME: 551103	TYPE:	WEIGHT:
SPECIFICATION:	DIMENSION:	SERIAL No.:



Test System:HOPOO HPG1900  
Temperature:25.3DEG  
Operators:  
Test Date:2023年09月12日

Test Set: 5.0deg/s B-Beta (TYPE B)  
Humidity:65.0%  
Test Distance:16.000 m  
Remarks:

# HONGPU GONIOPHOTOMETERS SYSTEM TEST REPORT

## ZONAL FLUX DIAGRAM

Report number:

MANUFACTURER:	Address:	
NAME: 551103	TYPE:	WEIGHT:
SPECIFICATION:	DIMENSION:	SERIAL No.:

$\gamma$	C0	C45	C90	C135	C180	C225	C270	C315	$\gamma$	$\Phi$ zone	$\Phi$ total
5.0	258.0	239.2	217.6	197.5	196.3	196.7	216.4	238.3	0- 5	5.392	5.392
10.0	253.6	229.0	199.2	163.2	160.0	161.7	196.8	227.3	5- 10	14.86	20.25
15.0	221.9	206.6	180.9	136.9	133.3	134.8	177.2	204.0	10- 15	21.92	42.18
20.0	174.3	176.0	162.5	118.3	116.9	115.6	157.6	172.5	15- 20	26.33	68.52
25.0	129.7	142.3	144.1	105.2	107.5	102.1	138.0	138.1	20- 25	28.43	96.95
30.0	97.53	111.5	125.7	97.05	102.1	93.51	118.4	106.7	25- 30	28.98	125.9
35.0	73.47	86.53	107.4	91.32	98.81	87.55	98.84	81.14	30- 35	28.69	154.6
40.0	54.52	67.70	89.03	87.75	96.25	83.56	79.24	62.30	35- 40	27.78	182.4
45.0	41.98	52.99	70.65	84.69	93.69	80.47	59.64	47.78	40- 45	26.44	208.8
50.0	33.53	41.28	64.93	82.30	91.13	77.92	54.84	37.03	45- 50	25.31	234.1
55.0	27.13	33.02	59.22	80.21	88.32	75.08	50.03	28.68	50- 55	24.87	259.0
60.0	22.01	28.72	53.50	77.19	84.99	72.18	45.22	25.20	55- 60	24.40	283.4
65.0	19.71	25.17	47.78	74.68	81.15	69.45	40.41	22.38	60- 65	23.78	307.2
70.0	18.68	22.38	42.06	72.45	77.05	66.37	35.61	19.92	65- 70	23.07	330.3
75.0	17.66	20.17	36.35	70.10	75.77	63.10	30.80	18.20	70- 75	22.33	352.6
80.0	16.89	18.35	30.63	68.31	79.61	59.98	25.99	16.70	75- 80	21.70	374.3
85.0	16.38	16.79	24.91	66.16	60.67	56.88	21.19	15.47	80- 85	21.05	395.4
90.0	15.10	15.36	19.20	63.74	13.82	53.50	16.38	14.33	85- 90	19.64	415.0
95.0	15.36	15.41	23.12	65.08	98.81	57.13	21.10	14.80	90- 95	20.10	435.1
100.0	15.10	15.57	27.05	66.16	107.5	60.53	25.82	15.41	95-100	21.75	456.9
105.0	15.36	15.93	30.97	66.80	93.95	63.93	30.54	16.20	100-105	22.09	479.0
110.0	15.61	16.80	34.90	68.06	79.36	67.46	35.27	17.44	105-110	21.74	500.7
115.0	15.87	17.92	38.82	69.14	82.17	70.78	39.99	19.36	110-115	21.65	522.4
120.0	16.12	19.84	42.75	70.22	85.24	73.69	44.71	21.69	115-120	21.84	544.2
125.0	18.43	22.43	46.67	71.81	87.80	76.71	49.43	24.72	120-125	22.03	566.3
130.0	23.04	26.59	50.60	73.59	90.11	78.12	54.15	28.86	125-130	22.13	588.4
135.0	28.67	31.51	54.52	75.49	91.90	79.19	58.88	33.71	130-135	21.97	610.4
140.0	34.56	36.58	57.48	76.87	93.18	80.44	61.32	38.67	135-140	21.35	631.7
145.0	40.70	42.14	60.44	78.25	93.69	81.14	63.77	44.00	140-145	20.30	652.0
150.0	47.36	47.98	63.40	79.37	93.44	81.67	66.21	49.71	145-150	18.86	670.9
155.0	54.27	53.88	66.36	80.03	92.67	81.95	68.66	55.40	150-155	16.99	687.9
160.0	60.67	59.89	69.31	80.45	91.13	81.92	71.11	61.20	155-160	14.70	702.6
165.0	66.81	65.66	72.27	80.55	89.08	81.62	73.55	66.59	160-165	12.01	714.6
170.0	72.44	71.31	75.23	80.81	86.27	81.40	76.00	71.78	165-170	8.952	723.6
175.0	77.31	76.47	78.19	81.01	83.71	81.23	78.44	76.70	170-175	5.567	729.1
180.0	81.15	81.15	81.15	81.15	80.89	80.89	80.89	80.89	175-180	1.907	731.0
DEG	LUMINOUS INTENSITY:cd								UNIT:lm		

Test System:HOPOO HPG1900  
Temperature:25.3DEG  
Operators:  
Test Date:2023年09月12日

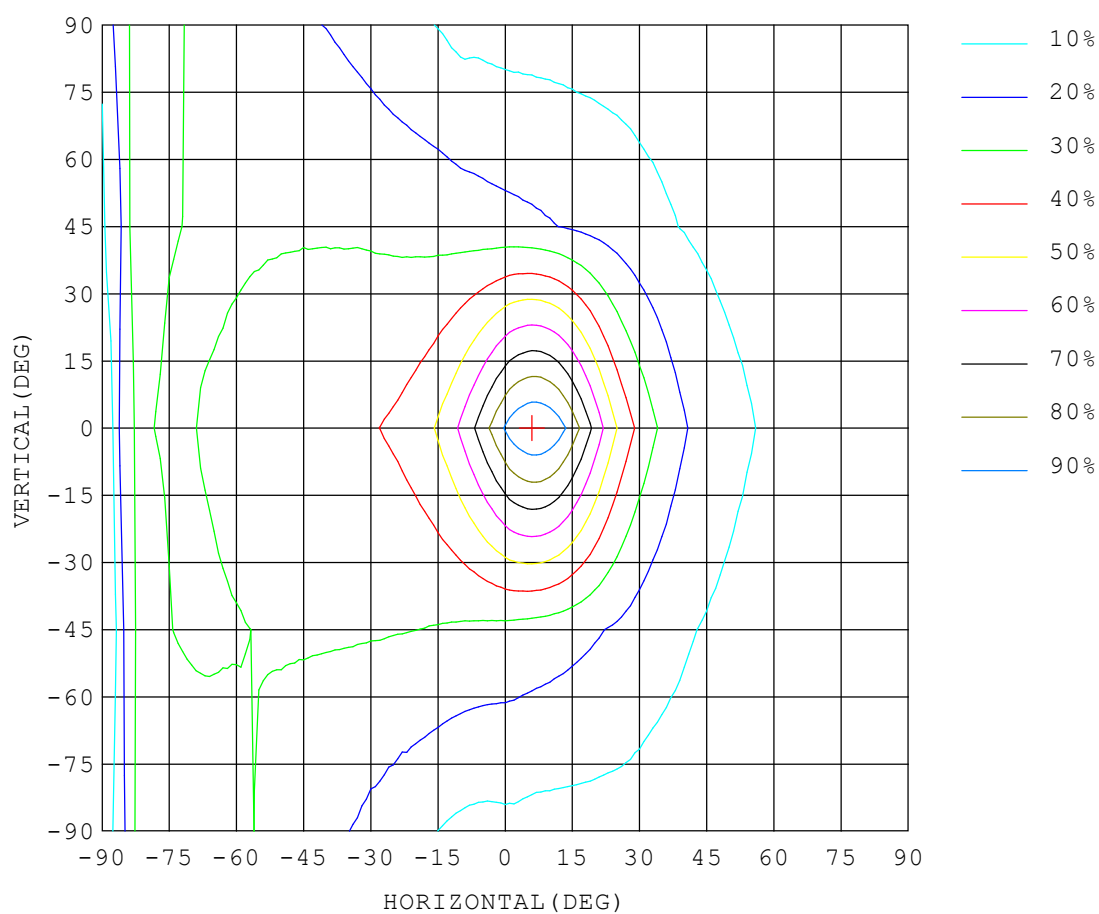
Test Set: 5.0deg/s B-Beta (TYPE B)  
Humidity:65.0%  
Test Distance:16.000 m  
Remarks:

## ISOCANDELA DIAGRAM

Report number:

MANUFACTURER:	Address:	
NAME: 551103	TYPE:	WEIGHT:
SPECIFICATION:	DIMENSION:	SERIAL No.:

UNIT: cd



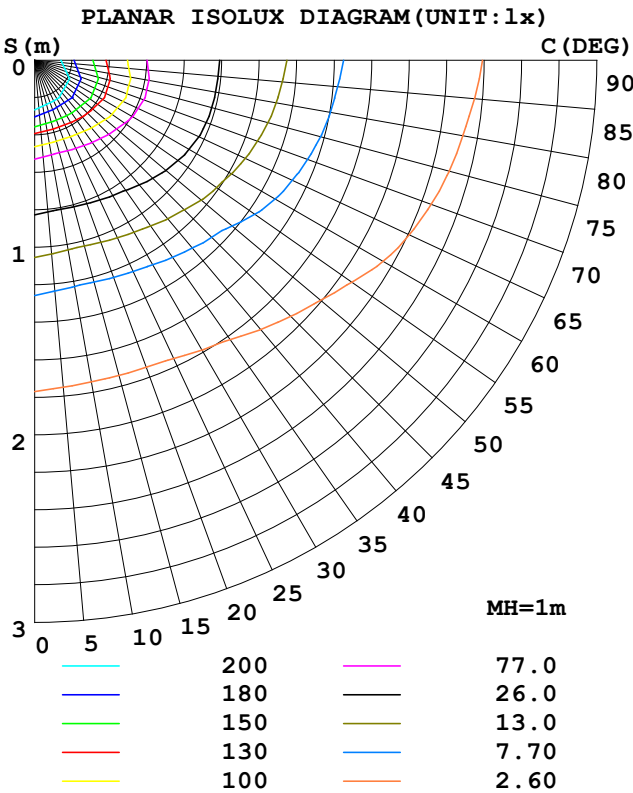
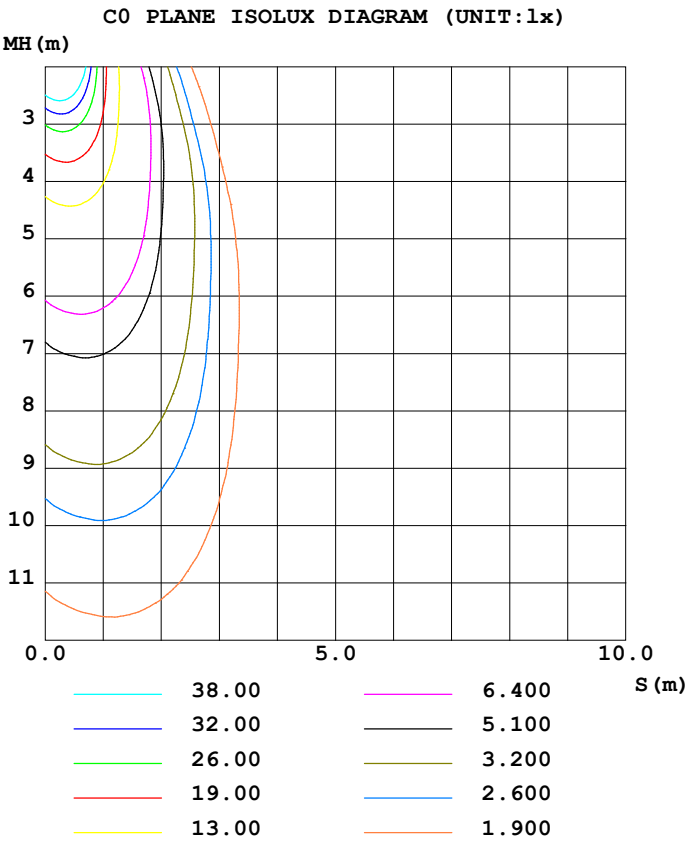
Test System:HOPOO HPG1900  
Temperature:25.3DEG  
Operators:  
Test Date:2023年09月12日

Test Set: 5.0deg/s B-Beta (TYPE B)  
Humidity:65.0%  
Test Distance:16.000 m  
Remarks:

ISOLUX DIAGRAM

Report number:

MANUFACTURER:	Address:	
NAME: 551103	TYPE:	WEIGHT:
SPECIFICATION:	DIMENSION:	SERIAL No.:



Test System:HOPOO HPG1900  
Temperature:25.3DEG  
Operators:  
Test Date:2023年09月12日

Test Set: 5.0deg/s B-Beta (TYPE B)  
Humidity:65.0%  
Test Distance:16.000 m  
Remarks:

# HONGPU GONIOPHOTOMETERS SYSTEM TEST REPORT

## LUMINOUS DISTRIBUTION INTENSITY DATA

Report number:

MANUFACTURER:	Address:	
NAME: 551103	TYPE:	WEIGHT:
SPECIFICATION:	DIMENSION:	SERIAL No.:

UNIT: cd

C (DEG) γ (DEG)	0	5	10	15	20	25	30	35	40	45	50	55	60	65	70
0.0	236	236	236	236	236	236	236	236	236	236	236	236	236	236	236
5.0	258	256	254	252	250	248	246	244	241	239	237	235	233	230	228
10.0	254	250	247	244	241	238	236	234	231	229	227	224	221	218	215
15.0	222	218	214	212	210	209	208	208	207	207	206	205	203	201	198
20.0	174	170	168	167	166	167	169	171	173	176	178	180	180	180	179
25.0	130	126	124	123	124	126	129	133	138	142	147	152	155	157	157
30.0	97.5	94.6	92.9	92.4	92.8	94.4	97.0	101	106	112	118	123	128	132	134
35.0	73.4	71.0	69.8	69.4	70.0	71.7	74.0	77.4	81.4	86.5	92.2	98.3	104	108	111
40.0	54.5	52.6	51.6	51.8	52.5	54.4	56.6	59.5	63.3	67.7	72.5	77.4	82.2	85.9	88.7
45.0	41.9	40.4	39.6	39.5	40.1	41.5	43.6	46.2	49.0	52.9	57.2	61.1	64.2	66.3	67.6
50.0	33.5	32.2	31.5	31.4	31.8	32.8	34.2	36.3	38.8	41.2	44.8	48.3	50.8	53.9	56.5
55.0	27.1	25.9	25.3	25.2	25.8	26.5	27.8	29.2	31.1	33.0	36.4	41.4	45.1	48.0	50.7
60.0	22.0	21.4	21.1	21.0	21.1	21.7	22.8	24.2	26.1	28.7	31.5	35.5	39.7	42.6	45.2
65.0	19.7	19.0	18.6	18.5	18.5	18.4	19.2	21.1	23.1	25.1	27.6	30.6	34.6	37.4	39.9
70.0	18.6	17.9	17.5	17.2	17.2	17.1	17.4	18.9	20.5	22.3	24.3	26.6	30.2	32.7	34.9
75.0	17.6	17.0	16.4	16.4	16.3	16.5	16.7	17.2	18.7	20.1	21.8	23.4	25.9	28.2	30.0
80.0	16.8	16.1	15.6	15.6	15.8	15.8	15.9	16.3	17.2	18.3	19.4	20.6	22.3	24.0	25.2
85.0	16.3	15.1	15.1	15.1	15.3	15.3	15.3	15.6	16.0	16.7	17.3	18.0	19.0	19.9	20.6
90.0	15.1	14.5	14.8	14.8	14.8	14.8	14.8	15.1	15.1	15.3	15.3	15.6	15.8	15.8	16.1
95.0	15.3	14.5	14.6	14.6	14.7	14.7	14.7	15.0	15.0	15.4	15.9	16.6	17.3	17.8	18.5
100.0	15.1	14.8	14.5	14.6	14.6	14.7	14.7	15.0	15.0	15.5	16.6	17.6	18.7	19.8	21.0
105.0	15.3	15.0	14.7	14.6	14.6	14.6	14.9	14.9	15.0	15.9	17.4	18.9	20.3	21.9	23.5
110.0	15.6	15.3	15.0	14.8	14.6	14.6	14.8	14.9	15.1	16.8	18.7	20.4	22.4	24.2	26.2
115.0	15.8	15.4	15.2	15.0	14.8	15.0	14.8	14.9	15.9	17.9	20.2	22.3	24.6	26.8	29.1
120.0	16.1	15.8	15.5	15.7	16.1	16.1	15.7	15.5	17.5	19.8	22.2	24.7	27.2	29.7	32.3
125.0	18.4	18.0	18.0	18.1	18.1	18.1	18.2	19.1	20.4	22.4	24.9	27.6	30.1	33.0	35.7
130.0	23.0	22.2	21.8	21.5	21.4	21.6	22.4	23.4	24.9	26.5	28.7	30.9	33.6	36.4	39.4
135.0	28.6	27.4	26.6	26.2	26.3	26.6	27.3	28.4	29.7	31.5	33.3	35.4	38.0	40.5	43.5
140.0	34.5	33.3	32.4	32.0	31.9	32.2	32.9	33.9	35.1	36.5	38.4	40.4	42.5	45.0	47.6
145.0	40.7	39.5	38.8	38.3	38.1	38.4	38.9	39.8	40.8	42.1	43.7	45.4	47.4	49.6	51.7
150.0	47.3	46.2	45.5	45.0	44.8	44.8	45.3	45.9	46.8	47.9	49.2	50.7	52.4	54.1	56.0
155.0	54.2	53.2	52.4	51.9	51.6	51.6	51.8	52.3	52.9	53.8	54.9	56.1	57.4	58.8	60.4
160.0	60.6	59.8	59.1	58.6	58.3	58.3	58.4	58.8	59.2	59.8	60.7	61.4	62.4	63.6	64.7
165.0	66.8	66.1	65.6	65.2	65.0	64.9	65.0	65.0	65.3	65.6	66.1	66.8	67.4	68.2	68.9
170.0	72.4	71.9	71.5	71.2	71.0	70.9	70.9	71.1	71.2	71.3	71.5	71.9	72.2	72.5	73.1
175.0	77.3	77.0	76.8	76.6	76.5	76.4	76.3	76.3	76.3	76.4	76.6	76.7	76.9	77.1	77.2
180.0	81.1	81.1	81.1	81.1	81.1	81.1	81.1	81.1	81.1	81.1	81.1	81.1	81.1	81.1	81.1

Test System:HOPOO HPG1900  
Temperature:25.3DEG  
Operators:  
Test Date:2023年09月12日

Test Set: 5.0deg/s B-Beta (TYPE B)  
Humidity:65.0%  
Test Distance:16.000 m  
Remarks:

# HONGPU GONIOPHOTOMETERS SYSTEM TEST REPORT

## LUMINOUS DISTRIBUTION INTENSITY DATA

Report number:

MANUFACTURER:	Address:		
NAME: 551103	TYPE:	WEIGHT:	
SPECIFICATION:	DIMENSION:	SERIAL No.:	

UNIT: cd

C (DEG) γ (DEG)	75	80	85	90	95	100	105	110	115	120	125	130	135	140	145
0.0	236	236	236	236	236	236	236	236	236	236	236	236	236	236	236
5.0	226	223	220	218	215	212	209	207	205	203	200	199	198	196	196
10.0	211	208	204	199	194	190	185	181	177	173	169	166	163	161	160
15.0	195	191	186	181	175	168	163	157	152	147	143	140	137	134	133
20.0	176	172	168	163	156	149	143	137	132	127	123	120	118	116	115
25.0	156	153	149	144	138	131	125	120	116	112	109	107	105	104	104
30.0	134	133	130	126	120	115	110	106	103	101	98.7	97.8	97.0	96.7	96.4
35.0	112	112	110	107	103	100	97.1	94.9	93.4	92.2	91.8	91.5	91.3	91.7	92.2
40.0	90.0	90.2	89.6	89.0	87.5	86.5	86.0	85.8	85.9	86.2	86.6	86.9	87.7	88.3	89.0
45.0	68.0	68.4	69.0	70.6	72.2	74.2	76.5	78.4	80.2	81.6	82.6	83.9	84.6	85.6	86.5
50.0	58.9	61.1	62.9	64.9	66.2	67.9	70.3	72.9	75.4	77.8	79.7	81.1	82.3	83.3	84.2
55.0	53.1	55.3	57.2	59.2	60.2	62.1	64.7	67.7	70.6	73.2	76.1	78.2	80.2	81.2	82.2
60.0	47.5	49.5	51.4	53.5	54.2	56.2	59.2	62.7	66.0	69.1	72.1	75.0	77.1	79.0	80.3
65.0	42.0	43.7	45.7	47.7	48.3	50.3	53.7	57.8	61.3	65.3	68.8	72.1	74.6	76.8	78.3
70.0	36.6	38.2	40.0	42.0	42.3	44.4	48.2	52.7	56.5	61.5	65.6	69.4	72.4	74.9	77.2
75.0	31.3	32.6	34.3	36.3	36.2	38.5	42.7	47.6	52.3	57.6	62.5	66.6	70.1	73.8	76.6
80.0	26.2	27.2	28.6	30.6	30.2	32.5	37.2	42.5	47.9	53.3	59.2	64.3	68.3	73.1	76.6
85.0	21.1	21.8	23.0	24.9	24.2	26.5	31.6	37.3	43.4	49.0	55.8	61.4	66.1	72.1	76.8
90.0	16.1	16.3	17.4	19.2	18.1	20.4	25.8	32.0	38.6	44.5	52.2	58.3	63.7	70.9	76.8
95.0	19.0	19.7	21.1	23.1	22.5	24.9	30.1	35.9	42.1	47.7	54.7	60.3	65.0	71.1	75.9
100.0	22.0	23.1	24.9	27.0	26.8	29.3	34.2	39.7	45.3	50.8	56.8	62.1	66.1	71.1	74.8
105.0	25.0	26.5	28.7	30.9	31.2	33.6	38.2	43.4	48.4	53.8	58.9	63.2	66.8	70.7	73.6
110.0	28.1	30.0	32.5	34.9	35.5	37.9	42.1	47.0	51.1	56.3	60.8	64.8	68.0	70.5	73.0
115.0	31.4	33.6	36.4	38.8	39.8	42.2	46.0	50.6	54.5	58.7	62.6	66.2	69.1	71.2	72.9
120.0	34.9	37.4	40.2	42.7	44.0	46.4	49.9	54.0	57.8	61.2	64.6	67.7	70.2	72.2	73.5
125.0	38.4	41.2	44.2	46.6	48.3	50.6	53.7	57.4	60.8	63.9	66.9	69.5	71.8	73.8	75.7
130.0	42.2	45.2	48.1	50.6	52.5	54.8	57.6	60.8	64.0	66.8	69.2	71.5	73.5	75.6	77.6
135.0	46.3	49.3	52.1	54.5	56.6	58.6	61.1	63.7	66.5	68.9	71.1	73.2	75.4	77.3	79.3
140.0	50.2	52.8	55.3	57.4	59.4	61.2	63.4	65.8	68.3	70.7	72.9	74.9	76.8	78.9	80.7
145.0	54.1	56.3	58.5	60.4	62.1	63.8	65.8	67.8	70.0	72.3	74.4	76.4	78.2	80.2	81.9
150.0	58.0	59.9	61.7	63.4	64.9	66.4	68.0	69.7	71.6	73.6	75.6	77.5	79.3	81.0	82.7
155.0	61.9	63.4	65.0	66.3	67.7	68.9	70.2	71.7	73.2	74.9	76.7	78.4	80.0	81.6	83.1
160.0	65.8	67.0	68.2	69.3	70.4	71.3	72.5	73.6	74.9	76.1	77.5	78.9	80.4	81.7	83.1
165.0	69.7	70.6	71.3	72.2	73.1	73.8	74.7	75.6	76.5	77.5	78.5	79.5	80.5	81.5	82.6
170.0	73.7	74.1	74.5	75.2	75.8	76.4	76.8	77.4	78.1	78.8	79.4	80.1	80.8	81.5	82.2
175.0	77.3	77.5	77.8	78.1	78.5	78.8	79.1	79.4	79.7	80.0	80.2	80.5	81.0	81.4	81.8
180.0	81.1	81.1	81.1	81.1	81.1	81.1	81.1	81.1	81.1	81.1	81.1	81.1	81.1	81.1	81.1

Test System:HOPOO HPG1900  
Temperature:25.3DEG  
Operators:  
Test Date:2023年09月12日

Test Set: 5.0deg/s B-Beta (TYPE B)  
Humidity:65.0%  
Test Distance:16.000 m  
Remarks:

HONGPU GONIOPHOTOMETERS SYSTEM TEST REPORT

LUMINOUS DISTRIBUTION INTENSITY DATA

Report number:

MANUFACTURER:	Address:		
NAME: 551103	TYPE:	WEIGHT:	
SPECIFICATION:	DIMENSION:	SERIAL No.:	

UNIT: cd

C (DEG) γ (DEG)	150	155	160	165	170	175	180	185	190	195	200	205	210	215	220
0.0	236	236	236	236	236	236	236	236	236	236	236	236	236	236	236
5.0	195	194	194	194	195	195	196	195	194	194	194	194	194	195	196
10.0	158	157	157	157	158	159	160	158	157	157	156	156	157	159	160
15.0	131	131	131	131	131	132	133	132	131	130	130	130	130	131	133
20.0	114	114	114	114	115	116	117	115	114	113	113	112	112	113	114
25.0	103	103	104	104	105	106	108	106	104	103	102	102	101	101	102
30.0	96.8	97.4	97.9	98.8	99.7	101	102	100	99.0	97.7	96.4	95.5	94.6	93.8	93.5
35.0	92.7	93.4	94.3	95.1	96.2	97.4	98.8	97.0	95.4	94.0	92.8	91.5	90.3	89.2	88.4
40.0	89.7	90.6	91.5	92.6	93.6	94.8	96.2	94.4	92.7	91.3	89.8	88.4	87.2	86.1	84.7
45.0	87.4	88.2	89.1	90.0	91.1	92.3	93.6	91.8	90.1	88.5	87.1	85.8	84.5	83.1	82.0
50.0	85.1	86.0	86.7	87.5	88.5	89.7	91.1	89.2	87.5	86.0	84.5	83.2	81.9	80.5	79.1
55.0	83.1	83.6	84.3	85.0	85.7	86.8	88.3	86.3	84.7	83.4	82.1	80.8	79.6	78.2	76.6
60.0	80.8	81.3	81.7	82.2	82.8	83.6	84.9	83.1	81.7	80.6	79.4	78.4	77.2	76.0	74.1
65.0	78.8	78.8	79.0	79.3	79.4	80.0	81.1	79.5	78.1	77.5	76.6	75.8	74.7	72.9	71.1
70.0	78.0	77.6	76.3	76.0	76.1	76.5	77.0	76.8	76.1	74.5	73.8	74.0	72.9	70.2	68.2
75.0	78.1	78.6	76.8	74.0	75.7	76.4	75.7	76.7	77.2	74.9	71.4	72.3	72.5	68.4	65.1
80.0	79.2	81.2	80.9	80.3	80.1	83.0	79.6	80.6	79.0	78.1	72.2	69.8	72.1	67.5	62.0
85.0	81.1	84.7	87.1	88.5	91.1	75.8	60.6	80.6	82.9	81.9	73.0	66.9	71.1	66.6	59.0
90.0	82.9	88.8	93.6	96.5	98.0	50.4	13.8	69.8	82.4	85.2	72.9	64.2	70.1	65.2	55.8
95.0	80.3	86.2	93.6	99.3	103	94.6	98.8	103	97.7	92.5	77.2	68.0	71.6	67.0	59.3
100.0	77.5	82.0	90.2	99.5	105	107	108	107	106	93.4	78.2	71.3	73.0	68.1	62.7
105.0	75.4	76.6	83.2	92.8	96.6	96.7	93.9	96.0	94.0	87.1	75.8	74.0	73.8	69.4	66.0
110.0	74.2	74.0	75.1	82.2	85.8	84.4	79.3	82.2	82.3	78.8	76.0	75.8	74.4	71.5	69.3
115.0	73.6	74.6	75.9	77.7	80.8	82.4	82.1	81.1	79.7	78.9	78.3	77.6	76.4	74.5	72.5
120.0	75.3	76.8	78.5	79.9	81.6	83.5	85.2	83.6	82.4	81.4	80.5	79.6	78.7	77.6	75.8
125.0	77.4	79.1	80.7	82.5	84.3	86.2	87.8	86.2	84.9	83.8	82.7	81.6	80.5	79.4	78.1
130.0	79.4	81.2	82.9	84.7	86.6	88.5	90.1	88.5	87.0	85.8	84.7	83.4	82.3	81.0	79.8
135.0	81.0	83.0	84.7	86.5	88.4	90.3	91.9	90.3	88.9	87.6	86.3	85.2	83.8	82.5	80.9
140.0	82.5	84.3	86.1	87.8	89.7	91.5	93.1	91.7	90.2	88.8	87.5	86.4	84.9	83.5	81.9
145.0	83.7	85.4	87.1	88.7	90.5	92.2	93.6	92.3	91.0	89.7	88.4	87.0	85.6	84.2	82.7
150.0	84.5	86.0	87.7	89.1	90.8	92.4	93.4	92.2	91.1	89.9	88.6	87.4	86.0	84.6	83.2
155.0	84.7	86.1	87.5	88.9	90.4	91.8	92.6	91.6	90.6	89.5	88.3	87.2	85.9	84.6	83.4
160.0	84.4	85.7	87.0	88.1	89.2	90.3	91.1	90.3	89.4	88.5	87.6	86.5	85.3	84.3	83.1
165.0	83.6	84.7	85.8	86.6	87.5	88.3	89.0	88.4	87.7	87.0	86.2	85.3	84.5	83.4	82.5
170.0	82.8	83.5	84.1	84.8	85.4	85.9	86.2	85.8	85.3	84.8	84.3	83.7	83.1	82.5	81.9
175.0	82.1	82.4	82.7	83.1	83.4	83.6	83.7	83.4	83.2	82.9	82.7	82.4	82.1	81.8	81.5
180.0	81.1	81.1	81.1	81.1	81.1	81.1	80.8	80.8	80.8	80.8	80.8	80.8	80.8	80.8	80.8

Test System:HOPOO HPG1900  
Temperature:25.3DEG  
Operators:  
Test Date:2023年09月12日

Test Set: 5.0deg/s B-Beta (TYPE B)  
Humidity:65.0%  
Test Distance:16.000 m  
Remarks:



# HONGPU GONIOPHOTOMETERS SYSTEM TEST REPORT

## LUMINOUS DISTRIBUTION INTENSITY DATA

Report number:

MANUFACTURER:	Address:		
NAME: 551103	TYPE:	WEIGHT:	
SPECIFICATION:	DIMENSION:	SERIAL No.:	

UNIT: cd

C (DEG) γ (DEG)	225	230	235	240	245	250	255	260	265	270	275	280	285	290	295
0.0	236	236	236	236	236	236	236	236	236	236	236	236	236	236	236
5.0	197	198	200	202	204	206	208	211	213	216	219	222	224	227	229
10.0	162	164	167	171	175	178	183	187	192	197	202	205	209	213	216
15.0	135	138	141	145	149	154	159	165	171	177	183	187	191	195	198
20.0	116	117	120	124	128	133	138	144	151	158	163	168	171	174	176
25.0	102	103	105	108	111	115	120	126	132	138	143	147	150	151	151
30.0	93.5	93.8	94.4	95.9	97.7	101	104	108	113	118	123	126	127	127	126
35.0	87.5	87.1	86.9	86.8	87.5	88.5	90.2	92.4	95.3	98.8	102	103	104	103	100
40.0	83.5	82.2	81.2	80.3	79.3	78.6	78.2	78.0	78.2	79.2	80.0	80.5	80.4	79.3	77.0
45.0	80.4	78.7	77.0	75.1	73.0	70.6	67.9	64.9	61.8	59.6	58.1	57.5	57.3	57.0	56.5
50.0	77.9	75.8	73.7	71.0	68.3	65.5	62.3	59.4	56.8	54.8	52.9	51.2	48.8	46.5	44.1
55.0	75.0	73.1	70.2	67.3	64.3	61.1	57.7	54.5	52.0	50.0	48.1	46.4	44.2	41.8	39.5
60.0	72.1	70.0	67.1	63.7	60.3	56.9	53.2	49.5	47.3	45.2	43.4	41.7	39.7	37.4	35.3
65.0	69.4	66.8	63.9	60.1	56.4	52.6	48.7	44.4	42.5	40.4	38.8	37.2	35.3	33.2	31.3
70.0	66.3	63.9	60.7	56.6	52.3	48.2	44.2	39.3	37.7	35.6	34.2	32.8	31.0	29.3	27.5
75.0	63.1	60.9	57.4	53.0	48.3	43.8	39.5	34.1	32.8	30.8	29.6	28.4	26.9	25.6	24.1
80.0	59.9	58.0	54.0	49.3	44.1	39.3	34.8	28.9	28.0	25.9	25.0	24.1	22.9	21.9	20.8
85.0	56.8	54.8	50.5	45.5	39.8	34.7	30.0	23.7	23.1	21.1	20.4	19.8	19.0	18.3	17.7
90.0	53.5	51.4	46.8	41.4	35.3	29.9	25.0	18.4	18.1	16.3	15.8	15.6	15.1	14.8	14.5
95.0	57.1	55.1	50.7	45.6	39.9	34.7	30.0	23.6	23.0	21.1	20.2	19.5	18.6	17.8	17.1
100.0	60.5	58.5	54.4	49.6	44.3	39.4	34.8	28.8	27.9	25.8	24.6	23.5	22.1	20.9	19.6
105.0	63.9	61.7	57.9	53.4	48.6	44.0	39.5	34.0	32.7	30.5	29.1	27.5	25.7	24.1	22.3
110.0	67.4	64.8	61.3	57.2	52.7	48.5	44.2	39.1	37.5	35.2	33.5	31.7	29.5	27.4	25.2
115.0	70.7	68.0	64.6	60.7	56.8	52.9	48.7	44.1	42.3	39.9	38.0	35.9	33.4	30.8	28.5
120.0	73.6	71.0	67.7	64.4	60.8	57.2	53.2	49.2	47.1	44.7	42.5	40.1	37.5	34.7	31.9
125.0	76.7	74.1	71.2	68.0	64.8	61.3	57.5	54.1	51.8	49.4	47.1	44.5	41.7	38.8	35.8
130.0	78.1	76.1	74.3	71.7	68.7	65.5	62.0	59.0	56.5	54.1	51.8	49.0	46.1	43.1	40.2
135.0	79.1	77.6	75.6	73.5	71.3	68.6	65.9	63.7	61.1	58.8	56.4	53.6	50.6	47.4	44.3
140.0	80.4	78.6	76.7	74.7	72.5	70.2	67.6	65.4	63.3	61.3	59.1	56.7	54.0	51.1	48.4
145.0	81.1	79.5	77.7	75.7	73.6	71.4	69.3	67.3	65.5	63.7	61.8	59.7	57.3	54.9	52.5
150.0	81.6	80.1	78.4	76.6	74.7	72.7	71.1	69.3	67.7	66.2	64.6	62.7	60.7	58.8	56.8
155.0	81.9	80.5	78.9	77.3	75.6	74.1	72.7	71.3	70.0	68.6	67.3	65.8	64.2	62.6	61.0
160.0	81.9	80.6	79.3	77.9	76.7	75.6	74.3	73.2	72.2	71.1	70.0	68.8	67.6	66.4	65.2
165.0	81.6	80.5	79.6	78.7	77.8	76.9	76.0	75.2	74.5	73.5	72.7	71.9	71.1	70.1	69.4
170.0	81.4	80.7	80.1	79.5	78.9	78.3	77.7	77.2	76.6	76.0	75.4	74.9	74.4	73.9	73.4
175.0	81.2	80.9	80.6	80.3	80.0	79.7	79.4	79.1	78.7	78.4	78.1	77.8	77.6	77.4	77.3
180.0	80.8	80.8	80.8	80.8	80.8	80.8	80.8	80.8	80.8	80.8	80.8	80.8	80.8	80.8	80.8

Test System:HOPOO HPG1900  
Temperature:25.3DEG  
Operators:  
Test Date:2023年09月12日

Test Set: 5.0deg/s B-Beta (TYPE B)  
Humidity:65.0%  
Test Distance:16.000 m  
Remarks:

## HONGPU GONIOPHOTOMETERS SYSTEM TEST REPORT

## LUMINOUS DISTRIBUTION INTENSITY DATA

Report number:

MANUFACTURER:	Address:	
NAME: 551103	TYPE:	WEIGHT:
SPECIFICATION:	DIMENSION:	SERIAL No.:

UNIT: cd

C (DEG) γ (DEG)	300	305	310	315	320	325	330	335	340	345	350	355
0.0	236	236	236	236	236	236	236	236	236	236	236	236
5.0	232	234	236	238	241	243	245	247	250	252	254	256
10.0	219	222	225	227	230	232	235	237	240	243	246	250
15.0	200	202	203	204	205	206	206	207	209	211	214	217
20.0	176	176	174	173	170	168	166	165	165	165	167	170
25.0	149	146	142	138	134	130	126	124	122	122	123	126
30.0	122	117	112	107	101	97.2	93.9	91.9	90.9	91.1	92.1	94.1
35.0	96.4	91.6	86.2	81.1	76.8	73.7	71.1	69.6	68.5	68.4	69.1	70.6
40.0	74.0	70.0	66.0	62.3	59.0	56.4	54.3	52.6	51.2	50.7	50.9	52.3
45.0	55.3	53.0	50.6	47.7	45.5	43.3	41.3	39.7	38.7	38.5	38.9	40.1
50.0	41.6	39.8	38.4	37.0	35.2	33.3	31.9	30.9	30.6	30.5	30.9	31.9
55.0	37.0	34.3	31.2	28.6	27.4	26.4	25.6	24.9	24.6	24.7	25.1	25.8
60.0	32.9	30.0	27.5	25.2	22.9	21.4	20.8	20.5	20.7	20.8	21.0	21.3
65.0	29.1	26.5	24.3	22.3	20.4	19.0	17.8	17.9	18.3	18.4	18.5	18.9
70.0	25.7	23.6	21.6	19.9	18.6	17.4	16.9	16.9	17.0	17.2	17.5	17.9
75.0	22.5	20.9	19.4	18.2	17.1	16.3	16.2	16.2	16.2	16.2	16.4	17.0
80.0	19.7	18.5	17.6	16.7	16.1	15.7	15.6	15.6	15.6	15.5	15.6	16.2
85.0	17.1	16.5	15.9	15.4	15.3	15.1	15.1	15.1	15.0	15.1	15.2	15.3
90.0	14.5	14.5	14.3	14.3	14.5	14.5	14.5	14.5	14.5	14.5	14.5	14.8
95.0	16.5	16.0	15.3	14.8	14.6	14.5	14.5	14.5	14.5	14.4	14.4	14.3
100.0	18.6	17.4	16.5	15.4	14.6	14.5	14.5	14.5	14.4	14.3	14.3	14.6
105.0	20.8	19.2	17.7	16.2	14.9	14.6	14.5	14.5	14.5	14.3	14.6	14.7
110.0	23.2	21.3	19.4	17.4	15.6	14.7	14.5	14.5	14.6	14.8	14.8	15.0
115.0	26.0	23.8	21.5	19.3	17.2	15.2	14.8	14.8	14.8	14.9	15.1	15.3
120.0	29.2	26.7	24.1	21.6	19.1	17.0	15.9	16.1	15.8	15.6	15.3	15.6
125.0	32.8	30.0	27.3	24.7	22.6	20.6	19.3	18.4	18.0	18.0	17.7	17.8
130.0	37.1	34.0	31.3	28.8	26.9	25.1	23.6	22.7	21.9	21.6	21.6	22.0
135.0	41.3	38.3	35.8	33.7	31.5	29.9	28.6	27.6	26.9	26.6	26.9	27.4
140.0	45.7	43.1	40.7	38.6	36.9	35.3	34.1	33.2	32.6	32.5	32.7	33.2
145.0	50.2	48.0	46.0	44.0	42.4	41.0	40.1	39.3	38.8	38.7	38.9	39.4
150.0	54.8	52.9	51.3	49.7	48.4	47.1	46.3	45.8	45.3	45.5	45.8	46.4
155.0	59.5	58.0	56.6	55.4	54.4	53.4	52.9	52.5	52.2	52.2	52.5	53.1
160.0	64.1	62.9	62.0	61.2	60.3	59.7	59.2	59.0	59.0	59.0	59.2	59.7
165.0	68.5	67.9	67.2	66.5	66.1	65.8	65.5	65.4	65.4	65.5	65.8	66.2
170.0	72.8	72.5	72.1	71.7	71.6	71.4	71.3	71.3	71.4	71.5	71.7	72.0
175.0	77.1	76.9	76.8	76.7	76.6	76.5	76.5	76.5	76.5	76.6	76.7	76.8
180.0	80.8	80.8	80.8	80.8	80.8	80.8	80.8	80.8	80.8	80.8	80.8	80.8

Test System:HOPOO HPG1900  
Temperature:25.3DEG  
Operators:  
Test Date:2023年09月12日

Test Set: 5.0deg/s B-Beta (TYPE B)  
Humidity:65.0%  
Test Distance:16.000 m  
Remarks: